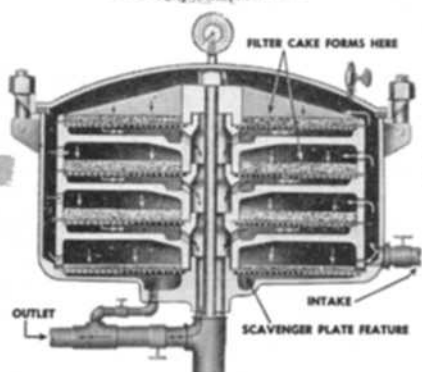


Last Drop filtration of chemicals with . . .

SPARKLER Horizontal Plate FILTERS



. any liquid from light alcohols to heavy varnishes.

Complete recovery of product is obtained by "wash through" or "blow down" of cake without removal from filter. The Sparkler scavenger plate acts as an auxiliary filter, with independent control valve filtering each batch down to the "last drop", leaving no holdover. Uniform density and firmness of the Sparkler cake on horizontal plates permit this easy method of complete recovery of product.

The horizontal plate principle of filtering chemicals provides complete flexibility and uniform dependable results. When diatomaceous filter aid is used it forms a pure silica sieve of uniform microsize mesh. Other filter media form a similar firm filter cake on the Sparkler horizontal plates. Flow is always *with* gravity. The horizontal position of the built-up cake prevents slipping or cracking either with continuous or intermittent flow.

Available in two plate depths, Sparkler construction provides deep plates for liquids carrying a large proportion of solids. Sparkler shallow plates for use on liquids carrying only a small proportion of solids provide a larger filtering area within the same size tank.

All Sparkler filters, even the large sizes, can be furnished with a portable base. Standard models available in capacities of 50 G.P.H. to 5000 G.P.H.

Sparkler filtration is Engineered Filtration—we invite correspondence on your problems. You will receive the advice of filtration engineers with a quarter of a century of experience in a specific field.

SPARKLER MANUFACTURING COMPANY
Mundelein, Illinois

1948 Revisions Out

AS A FOLLOW-UP to the 1946 revised edition of the Official Methods of Analysis, loose-leaf manual for laboratory use, the second set of Revisions, to be known as 1948 Revisions, has been issued by the technical editor of the American Oil Chemists' Society, V. C. Mehlenbacher of Swift and Company, Chicago. These follow the 1947 Revisions and likewise will be sold for 50c each. In an order for the Methods, which with binder sells for \$6, the Revisions will be included in the one price.



V. C. MEHLENBACHER

For the information of those hundreds of chemists who are using the 1946 edition and wish to keep it up-to-date, the index revision for 1948 is as follows:

Moisture and Volatile Matter—Peanuts.....	Ab	2-47	Revision
Oil—Peanuts	Ab	3-47	Revision
Nitrogen—Ammonia—Protein—Peanuts	Ab	4-47	Revision
Ash—Cake and Meal.....	Ba	5-47	Addition
Crude Fiber—Cake and Meal.....	Ba	6-47	Addition
Cellulose Yield—Cottonseed Linters and Hull Fiber.....	Bb	3-47	Revision
Moisture and Volatile Matter—Soya Flour..	Be	2-47	Addition
Oil—Soya Flour	Be	3-47	Addition
Nitrogen and Protein—Soya Flour.....	Be	4-47	Addition
Ash—Soya Flour	Be	5-47	Addition
Crude Fiber—Soya Flour.....	Be	6-47	Addition
Sampling—Animal and Vegetable Fats and Oils	C	1-47	Revision
Free Fatty Acids—Animal and Vegetable Fats and Oils.....	Ca	5a-40	Revision
Bleaching Test—Cottonseed Oil.....	Cc	8a-47	Revision
Bleaching Test—Soybean Oil.....	Cc	8b-47	Revision
Bleaching Test—Animal Fats.....	Cc	8c-47	Revision
Refined and Bleached Color—Animal Fats..	Cc	8d-48	Revision
Color—Animal and Vegetable Fats and Oils	Cc	13b-45	Revision
Acetyl and Hydroxyl Value—Animal and Vegetable Fats and Oils.....	Cd	4-40	Correction
Acid Value—Drying Oils.....	Ka	2-47	Addition
Color—Drying Oils	Ka	3-47	Addition
Refractive Index—Drying Oils.....	Ka	4-47	Addition
Specific Gravity—Drying Oils.....	Ka	5-47	Addition

Orders for the Methods and both 1947 and 1948 Revisions may be placed with the national headquarters of the American Oil Chemists' Society, 35 E. Wacker drive, Chicago 1, Ill. Remittance should accompany the order, if possible.

ISSUE 1948 DIRECTORY

TOWARD the end of this year the 1948 membership directory of the American Oil Chemists' Society will be published, the largest in the history of the Society. Information will comprise names of officers and committees, membership, history of the Society, the new constitution and by-laws, and so on. For each of the nearly 1,600 members the business address, year of joining, and home address will be listed. In the back of the book will be an application form, to be used by prospective members. Closing date for the inclusion of the names of new members was November 1.